



GMT MONTHLY MEMBERSHIP PROGRESS REPORT

Results as of: 5/31/2017

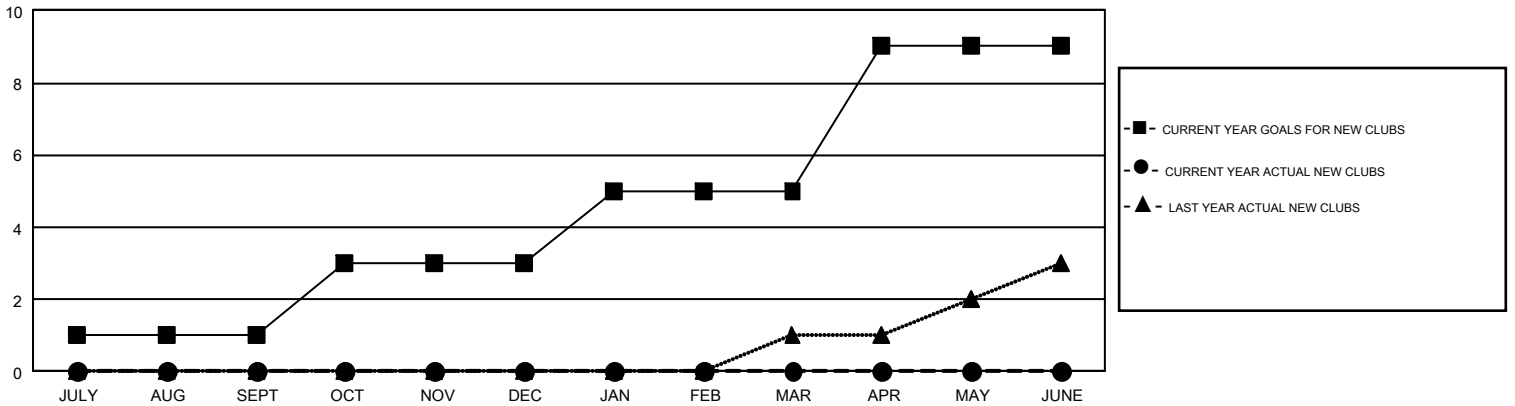
GMT Constitutional Area 7, Group B

GMT: HUCK TAINGAHUE

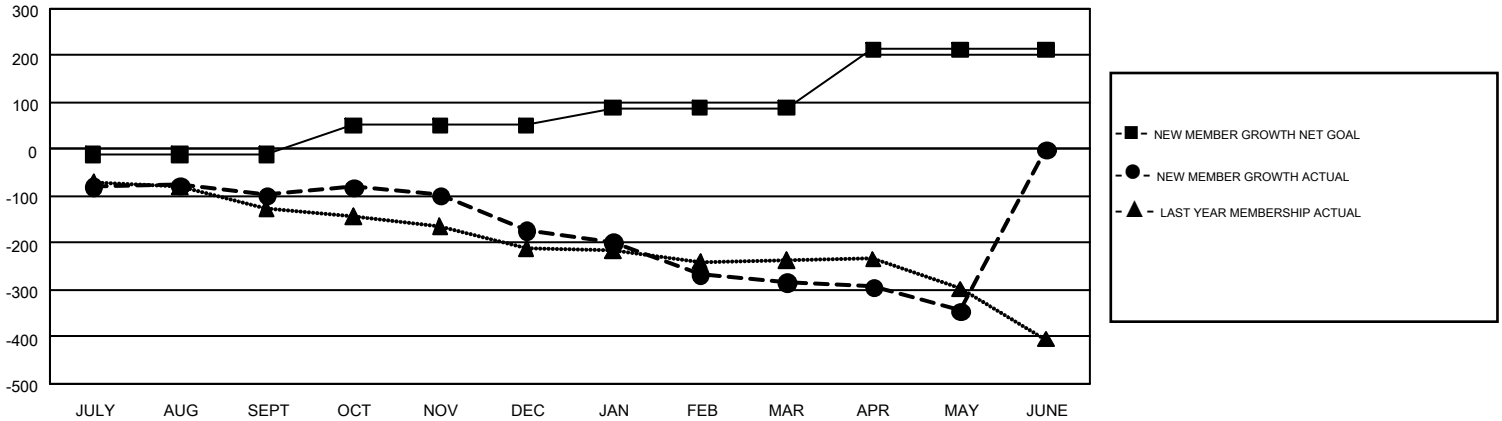
REPORT DOES NOT INCLUDE CLUBS IN UNDISTRICTED AREAS.

| Clubs | | | | Members | | | |
|-----------------------|---------------|-----------|---------------|-----------------------|--|--|--|
| RESULTS FOR 2016-2017 | | | | RESULTS FOR 2016-2017 | | | |
| QUARTER | NEW CLUB GOAL | NEW CLUBS | DROPPED CLUBS | QUARTER | NEW MEMBER GROWTH NET GOAL (not reinstated or transfers) | NEW MEMBER GROWTH ACTUAL (not reinstated or transfers) | DROPPED MEMBERS ACTUAL (including transfers) |
| JULY/AUG/SEPT | 1 | 0 | 3 | JULY/AUG/SEPT | -11 | 192 | 290 |
| OCT/NOV/DEC | 2 | 0 | 2 | OCT/NOV/DEC | 62 | 180 | 254 |
| JAN/FEB/MAR | 2 | 0 | 2 | JAN/FEB/MAR | 37 | 130 | 242 |
| APR/MAY/JUNE | 4 | 0 | 1 | APR/MAY/JUNE | 125 | 157 | 218 |

GOALS AND ACTUAL NEW CLUBS CUMULATIVE



GOALS AND ACTUAL MEMBERS CUMULATIVE



| | | |
|---------------------------------------|---|--|
| DROPPED CLUBS: 8 | 239 CLUBS OF 373 ADDED 1 OR MORE NEW MEMBERS | GENDER DISTRIBUTION |
| DROPPED MEMBERS | | MALE 6,881 (69.82%) |
| DECEASED 136 | | FEMALE 2,974 (30.18%) |
| CLUB CANCELLED 25 | CLICK HERE FOR CUMULATIVE MEMBERSHIP DATA | TOTAL FAMILY UNIT MEMBERS 848 |
| OTHER 843 | | FAMILY MEMBERS PAYING HALF DUES 429 |
| TOTAL 1,004 | | |